



INTELLIGENT CLOUD WiFi SYSTEM FOR CITIZENS AND CITY VISITORS



TOP CITY WiFi FEATURES



WiFi MANAGEMENT

Centralized WiFi management of the user accounts, access limits, Internet plans. All APs are connected to a central cloud server for authentication, accounting and management.



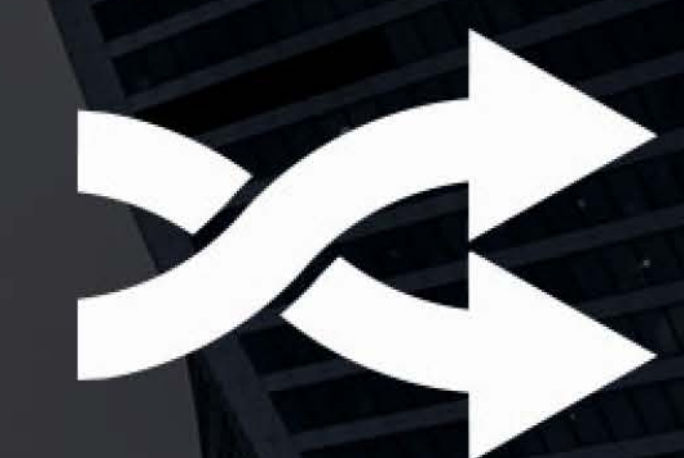
USER LEVEL LIMITS

Assign different limits to user accounts: download, upload, bandwidth quota, expiration date. Very high customization of user accounts which allows creating limited or unlimited accounts.



WiFi BILLING

Billing with preprinted vouchers, PayPal, 70+ payment gateways... Automate billing of your WiFi service and keep 100% of the profits.



INTERNET PLANS

Define price for Internet Plan and determine download and upload speed the guest will have during the session, total bandwidth data available for transfer, optional session duration...



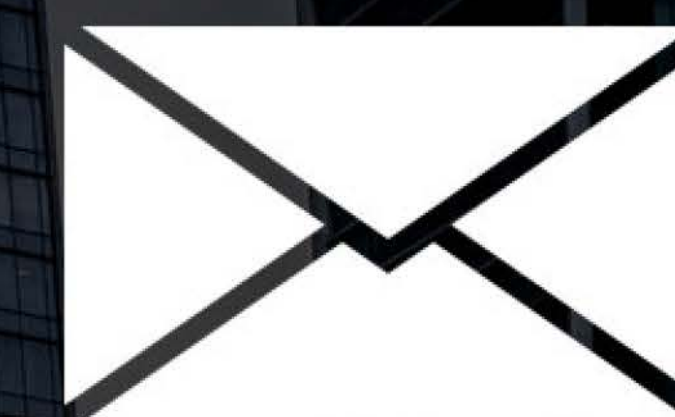
VIDEO ADS BEFORE LOGIN

The system can deliver video commercials before a guest connects to WiFi, targeted by age and gender. Each campaign includes the click-through rates stats, with a PDF report available



SOCIAL LOGIN

Your guest login via social network account is a quick and simple way to collect emails and your guests and visitors names, and therefore to use those data for purposes of marketing campaigns



EMAIL MARKETING

Send promo Email marketing campaigns automatically when a guest connects or leaves the premise. Set automated Email reminders to visit venues or sell products.



ADVANCED ANALYTICS

Ranging from basic data to advanced analytics, the system offers you both reports and a complete insight into how WiFi network functions and the behaviour of your guests on the Internet

IDEAL CITY WiFi SOLUTION

A fast and reliable WiFi network is expected today at all City institutions, hotels, restaurants, bars, airports, transport...

Start offering City WiFi services and grow slowly by adding new access points, connect different city areas, one step a time.

Easily integrate several separate WiFi networks in one large network, where all accounts are served from the central database .

Deliver video commercials and automatically sends special offers at defined time intervals, which leads to an increase in revenues from restaurants, hotels, retail stores and other city services.

Excellent WiFi contributes to greater city guest satisfaction and loyalty.



HOW CITY WiFi WORKS ?

Upon accessing your WiFi network, the guest is automatically redirected to the City WiFi self-branded login page. You can easily customize the welcome page by setting the logo and background and the ways in which your guests can access the Internet.

They may select the preferred connection method, like user/login, access-code login, free trial access or social login and start using WiFi. Once logged-in, they may be redirected to view desired website or City info page.

Each connected device is limited with download and upload speed, available bandwidth transfer, time to use your service, so you can ensure excellent WiFi experience for all your guests.

Start Hotspot City WiFi software will control the session duration, speed and bandwidth, and optionally collect your guest e-mail, name, address, for your safety and info marketing activity.



WiFi MARKETING

Cloud WiFi is an essential system to serve video or image advertisements over your WiFi network.

City WiFi system allows you to set up one or more video or image ads that will rotate each time when a customer connects to the WiFi.

Video or image advertisements can be created for individual products, brands or current sales promotions, implying discounts, coupons etc. which can be used immediately in the store.

The collage features four distinct digital coupons:

- Top Left:** An H&M coupon titled "IT'S BETTER BE A MEMBER" offering 25% off the next item. It includes the H&M logo, the Virgin Mobile logo, and a promo code "VM-07558".
- Top Right:** A McDonald's coupon for "THE GREAT SINGAPORE SAVE" featuring a "\$3 BIG BREAKFAST" for \$1.95. It includes the McDonald's logo and a "LIMITED TIME ONLY" badge.
- Bottom Left:** An H&M coupon for a "20% DISCOUNT" on one item of choice. It features a woman in a patterned dress and the H&M logo.
- Bottom Right:** A McDonald's coupon for "THE GREAT SINGAPORE SAVE" featuring a "\$3 BIG BREAKFAST" for \$1.95. It includes the McDonald's logo and a "LIMITED TIME ONLY" badge.



CLOUD WiFi SYSTEM

Cloud WiFi is a system of great possibilities which connects various devices into an intelligent WiFi network.

The system works on fast Microsoft Azure servers with high availability.

It provides centralized device management, guest WiFi network control, access methods settings, guest accounts updates, extraordinary analytics and reports, easy network expansion.

It supports WiFi devices of the leading network brands: Aruba, Cisco, Ruckus, Ubiquiti, Tp-Link, Mikrotik, Cradlepoint, D-Link, Asus, Meraki, Icomera, Open-Mesh, etc.

aruba
NETWORKS

UBIQUITI
NETWORKS

LigoWave

MikroTik

RUCKUS

TP-LINK
The Reliable Choice

Alcatel-Lucent

Meraki

CISCO

ASUS

D-Link

LINKSYS

cradlepoint

devolo

COMFAST

TELTONIKA

PowerCloud
systems

icomera

INSTANT NOTIFICATIONS

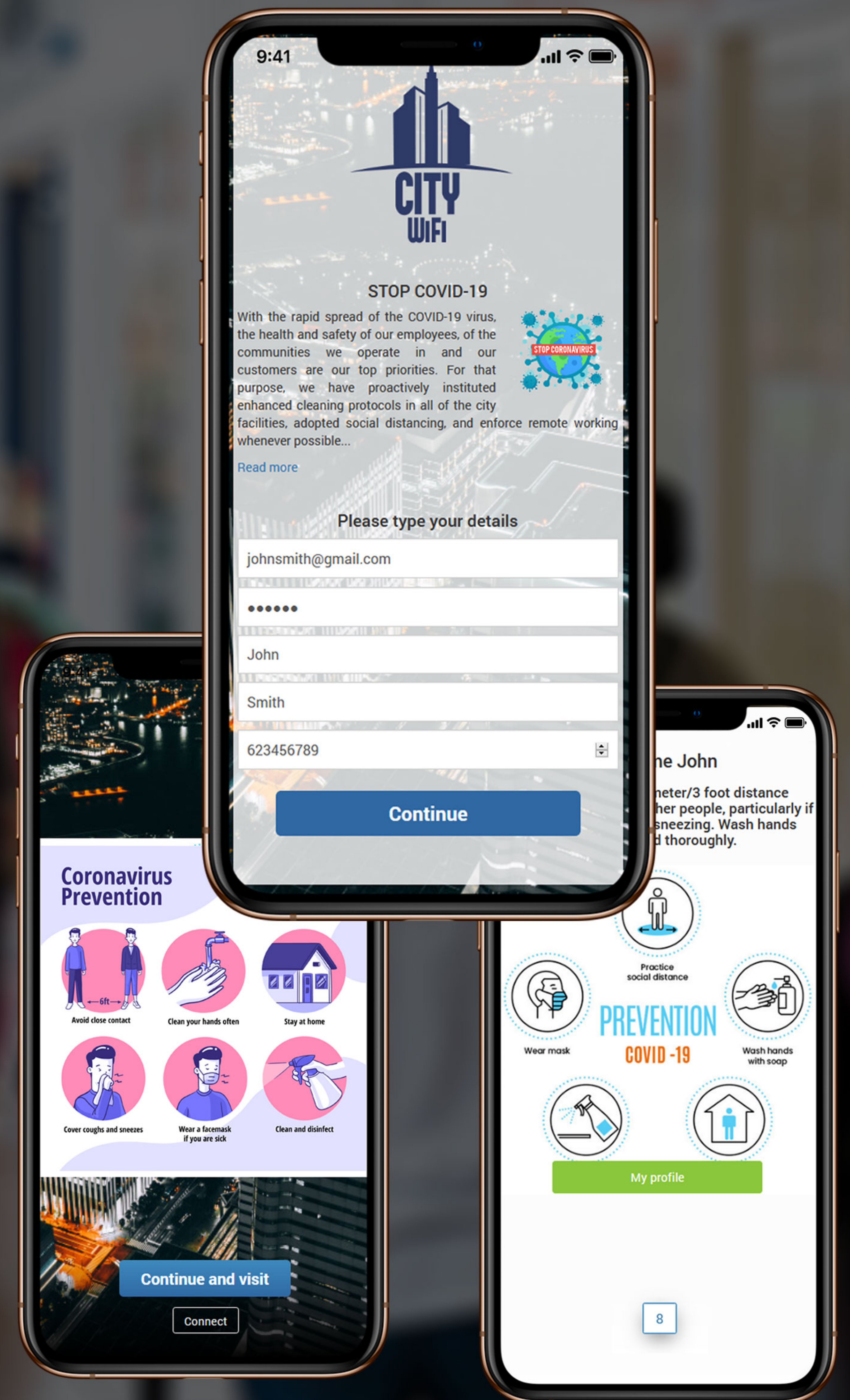
In order of pandemic suppression and Covid-19 prevention, you can collect contact details of your guests before they entering the WiFi location and notify them about city guidelines and regulations and remind them to keep safe social distance.

Track the number of visitors in your venue using City WiFi advanced analytics and use those information to notify them about safety measures.

Monitor users at a certain time, through names and phone numbers. When necessary or requested by authorities, all data can be easily exported to monitor nearby people, which greatly facilitates the process of combating the COVID-19 pandemic.

Contact information are collected in compliance with global data & privacy regulations GDPR.

Use your Splash or Welcome page as a message board and display notifications and relevant tourist information to introduce guests to all the city sights.



WiFi SURVEY

Your WiFi network is a perfect channel to gather the opinions of your customers.

Gather valuable information about your guests, which can be used for marketing purposes and to improve the quality of your services.

Resolve complaints about your services or the staff, which you would not have been informed about otherwise. Surveys can be displayed on the initial login page, or sent in an email after a defined time interval.

All the data are instantly available being gathered into legible analytics, without any paperwork.

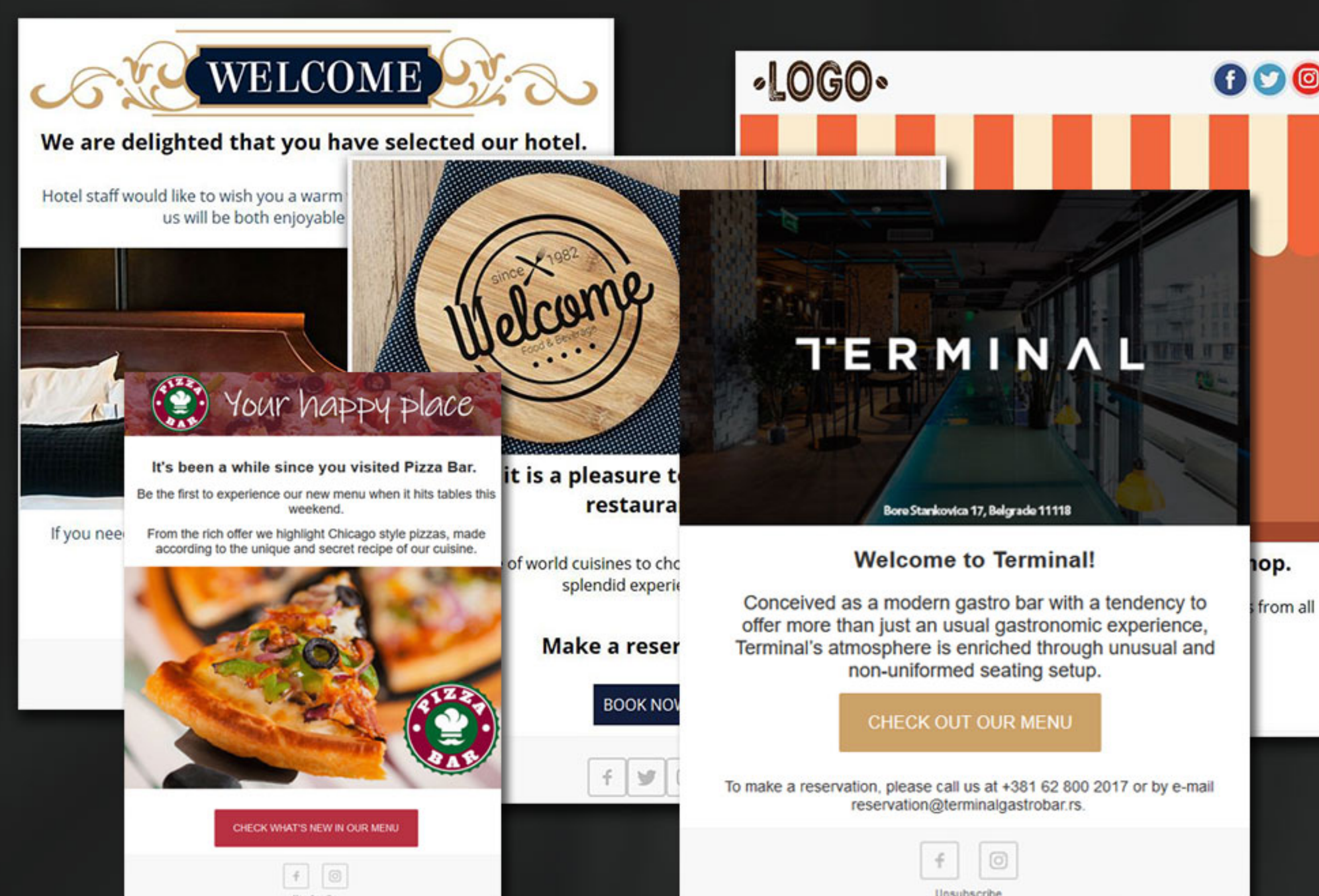


EMAIL MARKETING

Email marketing campaigns enable you to send information and promotional emails to your guests.

Those campaigns can be sent when necessary, if you want to inform your guests about the novelties, or automatically according to a previously defined schedule which includes initial connection, inactivity or on a guest's day of birth.

The integrated editor, which enables you to insert images, text, links and other features, helps you prepare the emails. The campaigns can be sent to your target guests immediately, or at a specified delivery time.



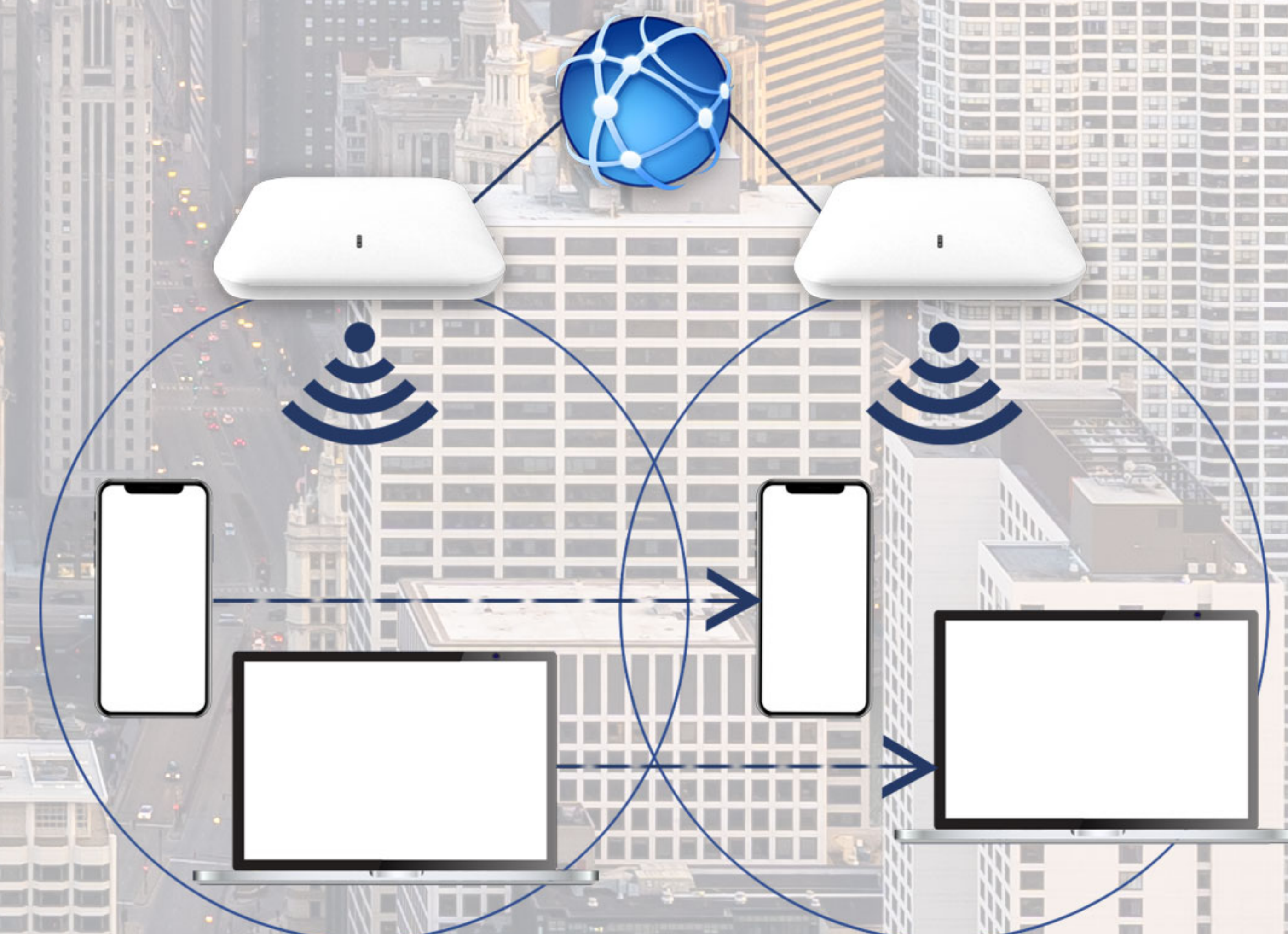
WiFi ROAMING

Allow user roaming throughout the entire WiFi network without interruptions.

Seamless WiFi Roaming provides a constant connection of the mobile users (smartphones, tablets, laptops) during their movement within the area covered by several access points.

When moving within the WiFi network, client device independently selects the most suitable AP based on the signal level, network load and other factors.

This way, WiFi clients will get continuous service when moving between the WiFi locations and they will get the Splash page only on the first authentication.



ADVANCED ANALYTICS

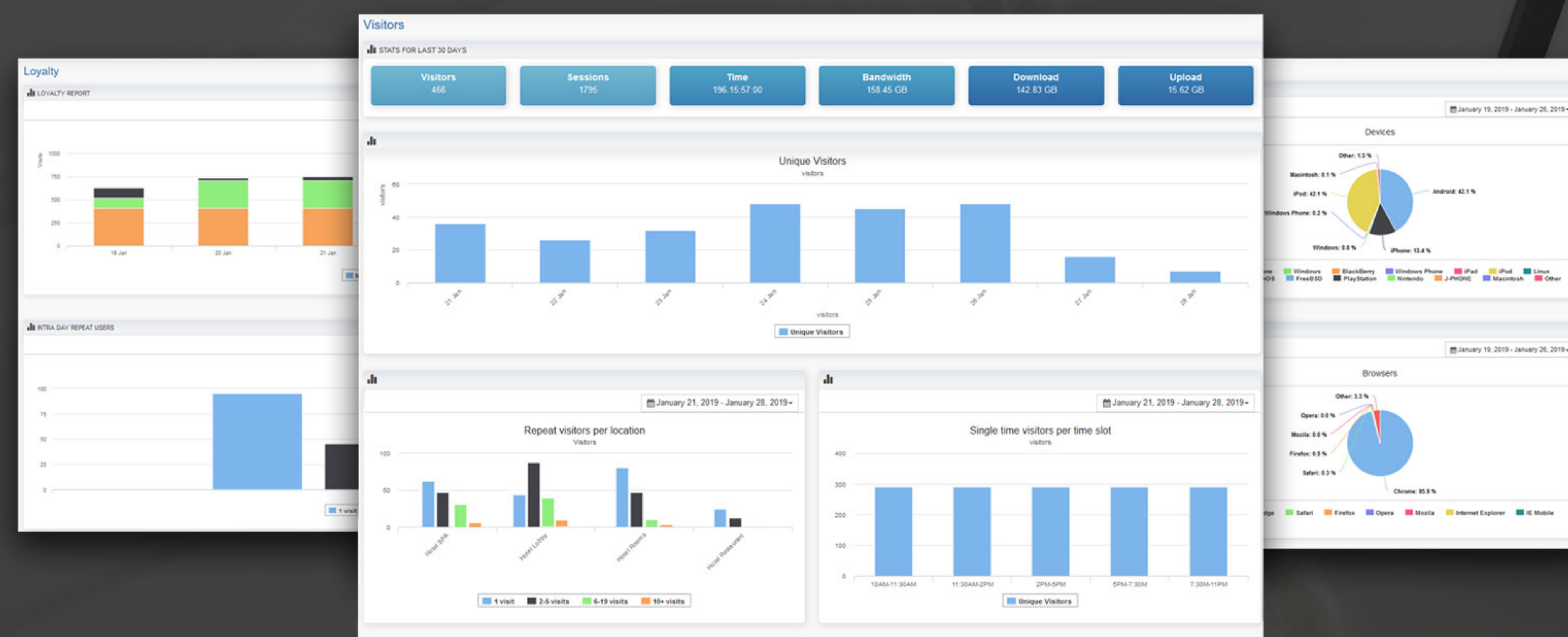
Ranking from basic data to advanced analytics, Cloud WiFi system offers a thorough insight into guests behaviour.

Get to know your visitors, find out what their habits are and prepare effective marketing campaigns.

Track Internet usage, set the limits to Internet plans, or set specific limits to individual users.

Visitors statistics have been divided into multiple reports which include loyalty, top users, time intervals, sex, age, and other demographic data.

Profile your visitors with ease, learn usage habits and prepare workable marketing activities.





Robert W Metts
MSIT Owner & Chief Engineer
SBRA Cloud Technologies Inc.
7862 West Irlo Bronson Memorial Highway
Suite 549
Kissimmee, Florida 34747

FL License - ES12000598

GA License - LVG105598

NC License - SP.FA/LV.33555

SC License - EL2314

Cell: 904-742-0565

Email: Rmetts@sbra-alpr.com

Website: www.sbracloud.com

<https://get.teamviewer.com/sbracloud>